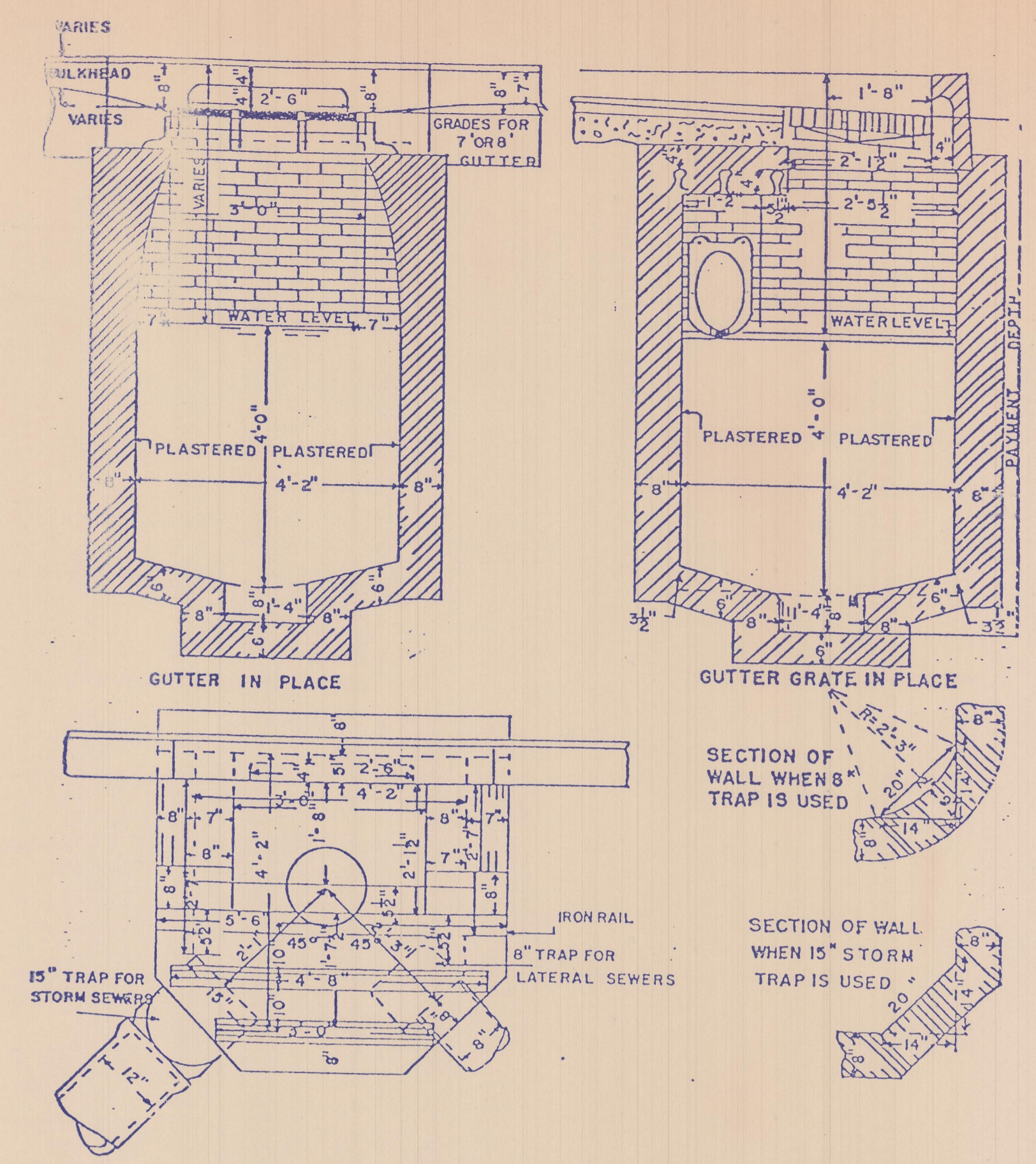
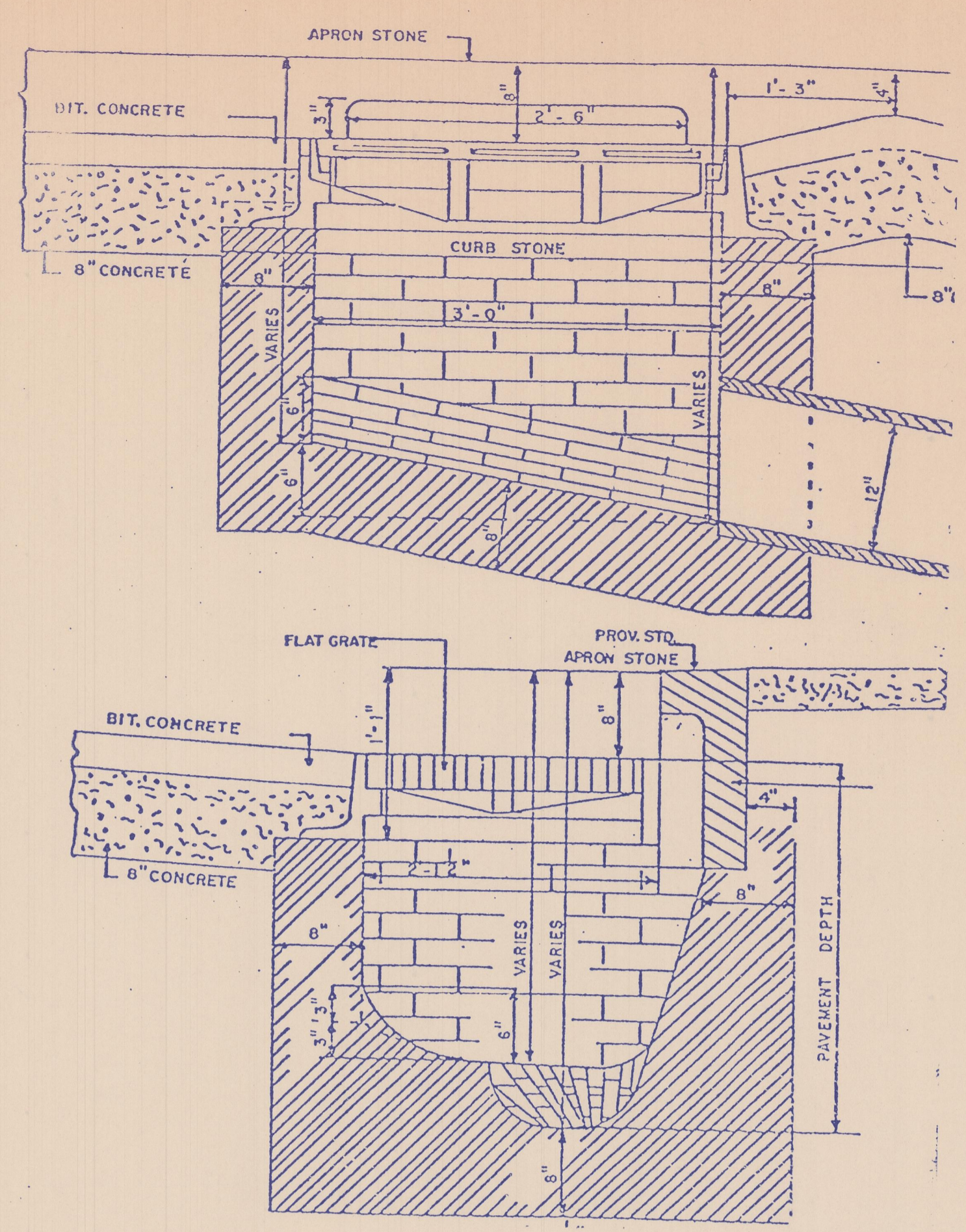


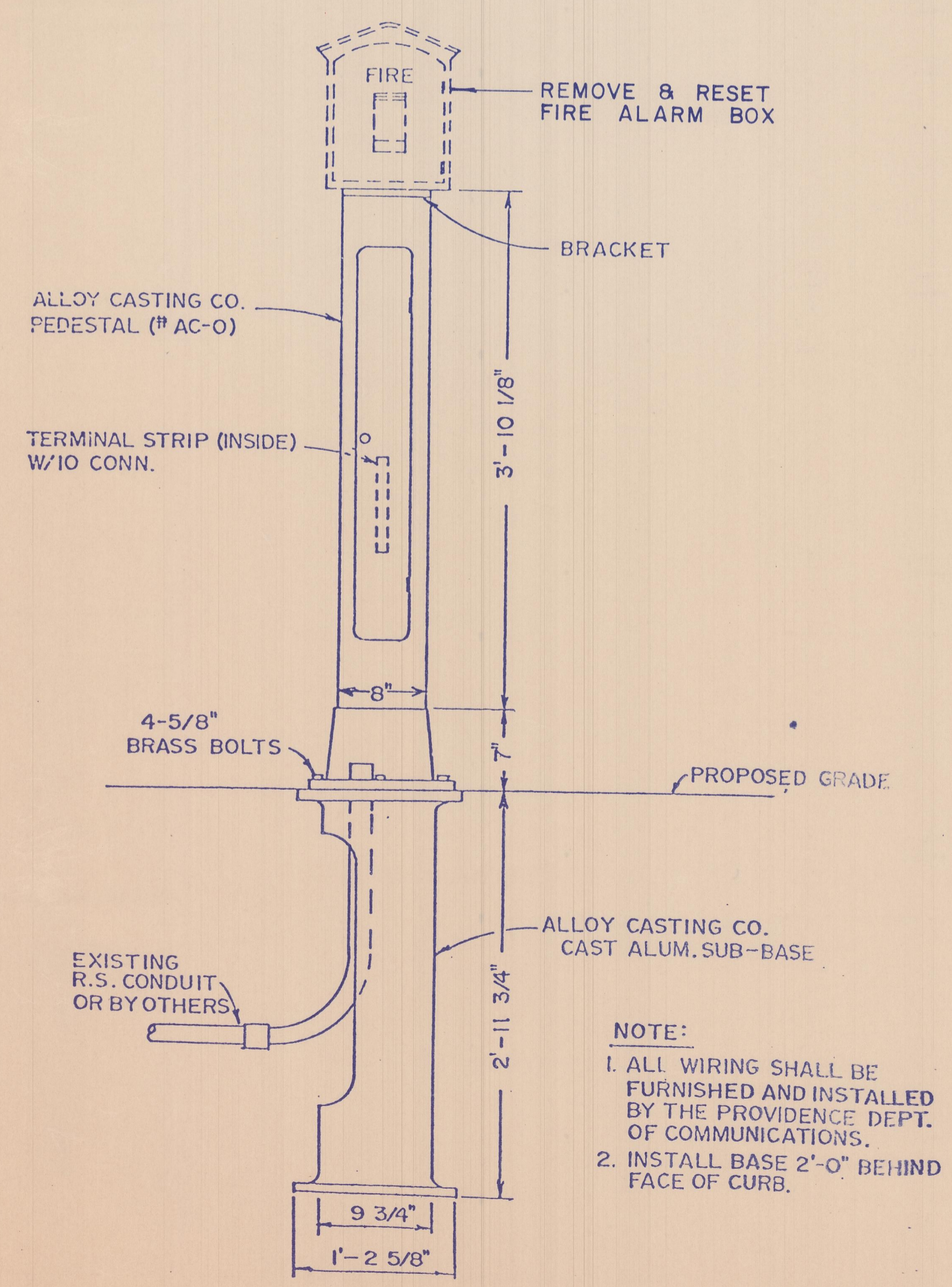
APRON STONE P-18
AS SHOWN



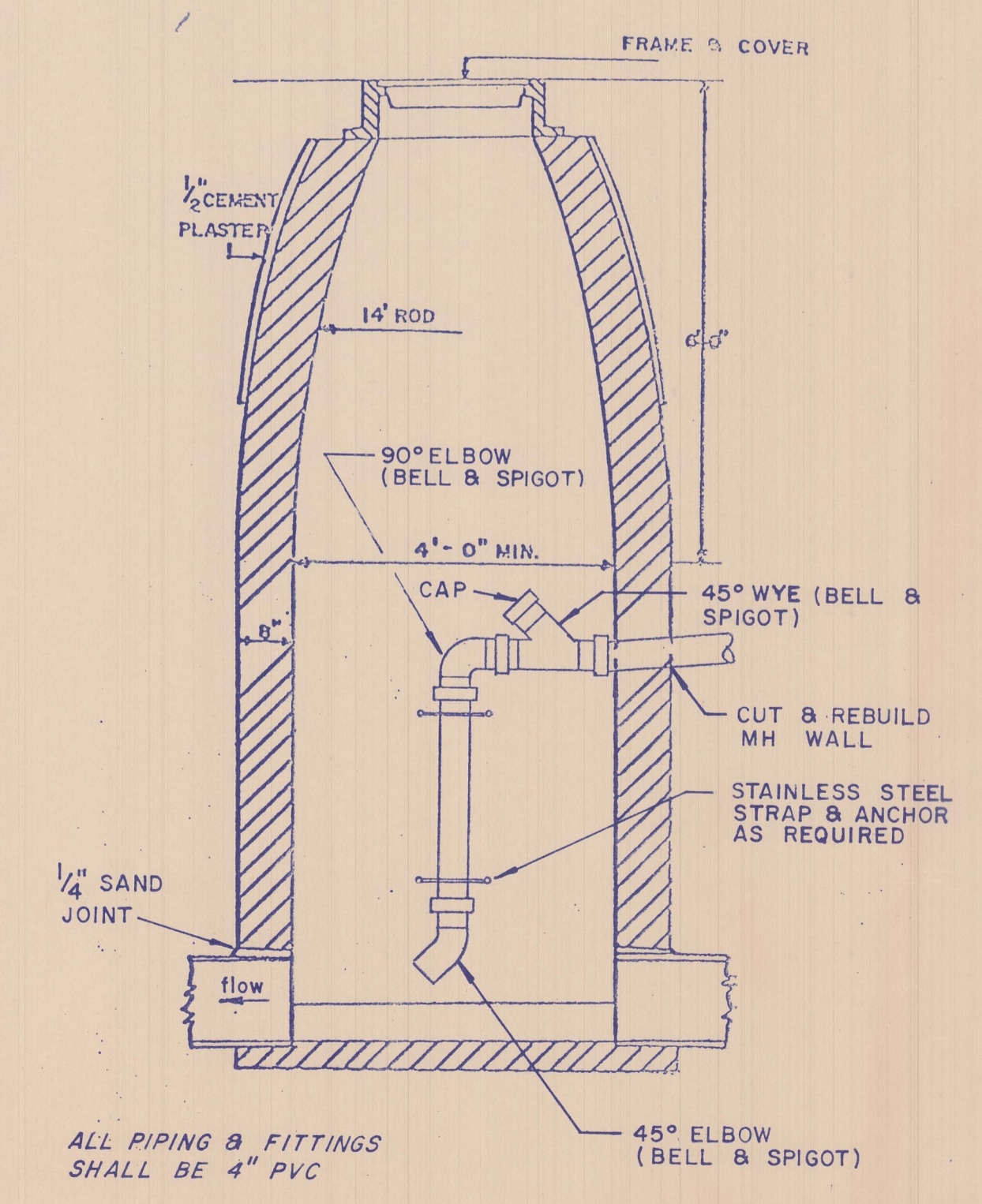
CATCH BASIN P-6
SCALE: 1/2" = 1'-0"



GUTTER INLET P-13
SCALE: 1" = 1'-0"

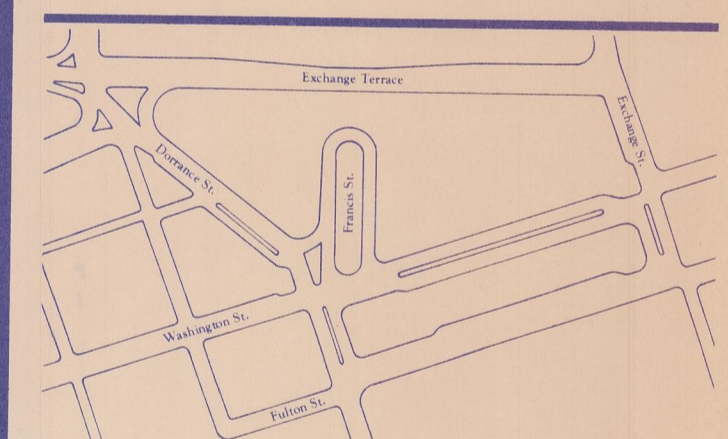


FIRE ALARM DETAIL
NOT TO SCALE



MODIFICATIONS TO EXIST. MH
NOT TO SCALE

no. revision date by



Kennedy Plaza
Transit Mall & Pedestrian Improvement Project

United States Department of Transportation
Urban Mass Transportation Administration
Providence Redevelopment Agency

Albert Veri & Associates, Inc.
60 Ship Street Providence Rhode Island 02903
401 274-1360
landscape architects/urban designers

Wallace Floyd Associates, Inc.
architects/planners
Lee Pare & Associates, Inc.
consulting engineers
Wilbur Smith Associates
traffic engineers
Kav Powell Associates & The Wissing Gengler Group, Inc.
signage consultants

drawing title

UTILITY DETAILS No. 3

date 7-13-83 sheet of
scale AS SHOWN drawing no.
drawn S. P.
checked J.L.B.